

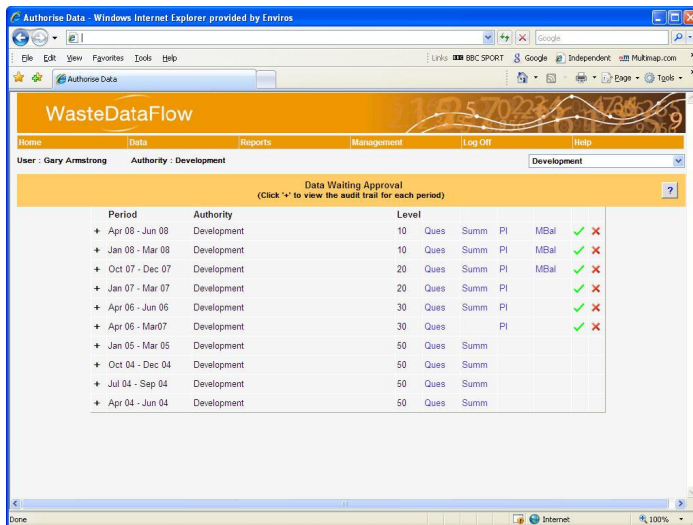
## WasteDataFlow Authorisation page navigation

On the data authorisation page you are able to open up to three Excel based reports to help you identify any errors in your return. These are:

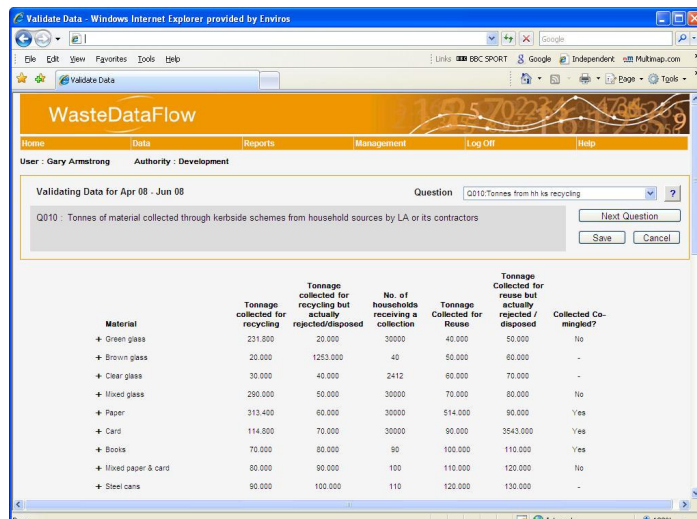
- a Summary report ([Summ](#) hyperlink) which enables you to view key variables and cross checks calculated from the return,
- the Performance Indicators ([PI](#) hyperlink) which for England shows the National Indicators and BVPIs and
- the mass balance report ([MBal](#) hyperlink – for disposal authorities only, WDA/UAs). Each of these reports open in excel in a separate window.

The same screen allows you to view the consolidated answers to all the questions from the [Ques](#) hyperlink. This opens in the same window as the data authorisation page. For those users who had selected a specific authority from the drop down in the corner of the page getting back from the questions meant re-choosing the authority.

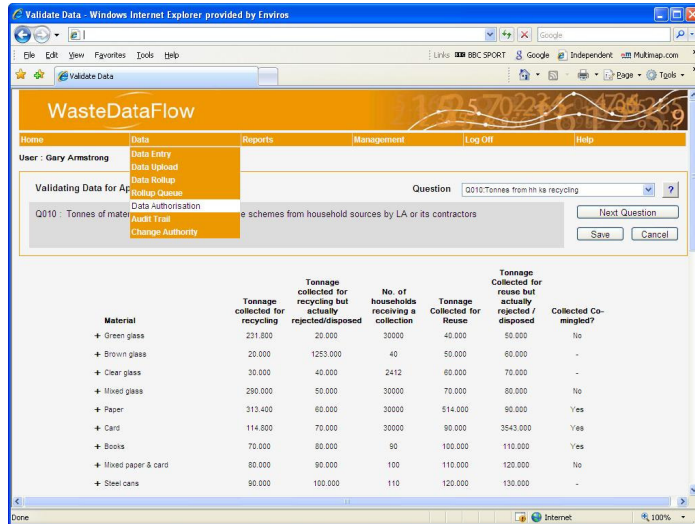
Now the chosen authority will be remembered by the system if you select the Data Authorisation menu choice whilst still on the Questions page.



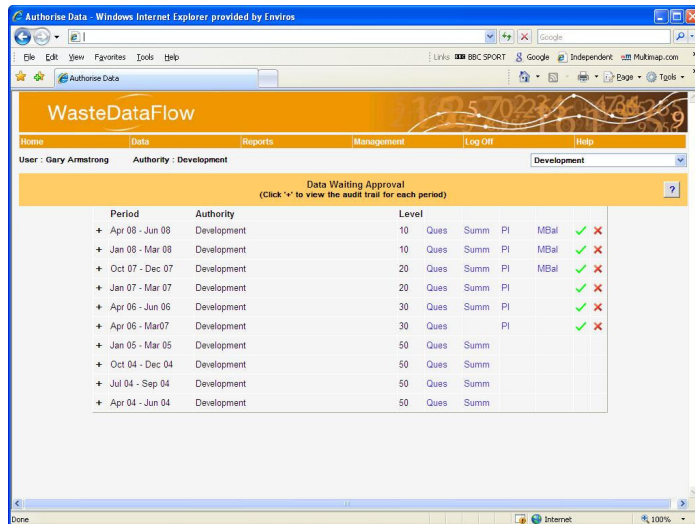
1. In this example I have chosen development authority, then [Ques](#), and am reviewing data in question 10.



2. Then when I choose the Data Authorisation menu again .....



3. I am returned to the page with the development authority still selected.



4. If you choose another menu item first the Data Authorisation choice will be lost.