

BVPI 82a – Percentage of household waste arisings which have been sent by the Authority for recycling

What the indicator measures:

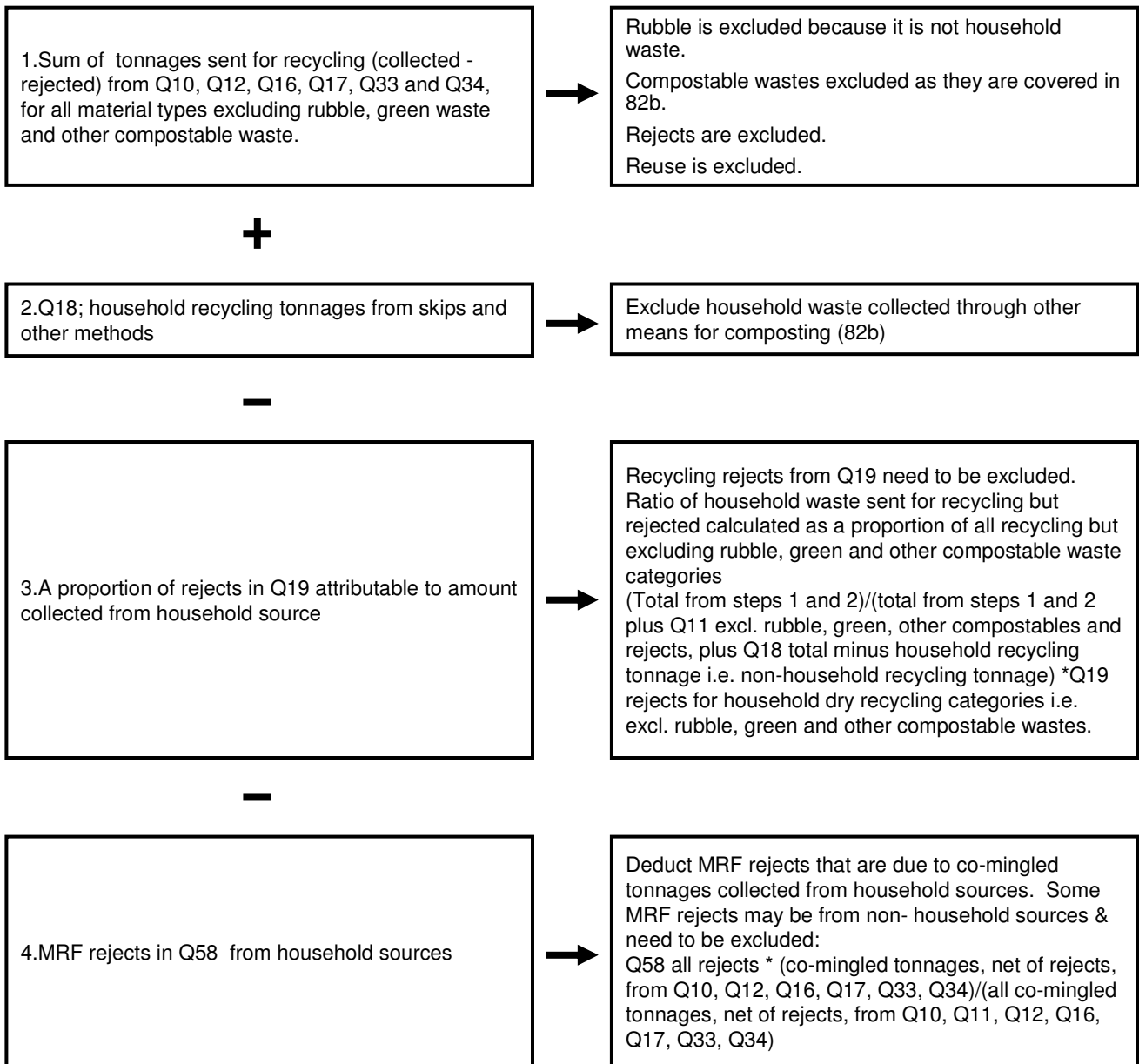
$$\frac{\text{Numerator}}{\text{Denominator}} \times 100$$

Numerator **Total tonnage of household waste sent for recycling**
 (excludes wastes sent for composting which are covered by 82b)

Denominator **Total tonnage of household waste arisings**

How the numerator and denominator are calculated using WasteDataFlow is summarised below setting out the questions data is drawn from.

Numerator



Denominator

1. Total tonnage of household waste collected for recycling from Q10, Q12, Q16, Q17, Q18 (household waste column), Q33 and Q34.



Excludes rubble and re-use.
Material rejected is not deducted as this is part of the total household waste arisings.

+

2. Total tonnage of residual household waste from Q23



All collected household waste, CA site household, separately collected healthcare waste & gully emptyings.