

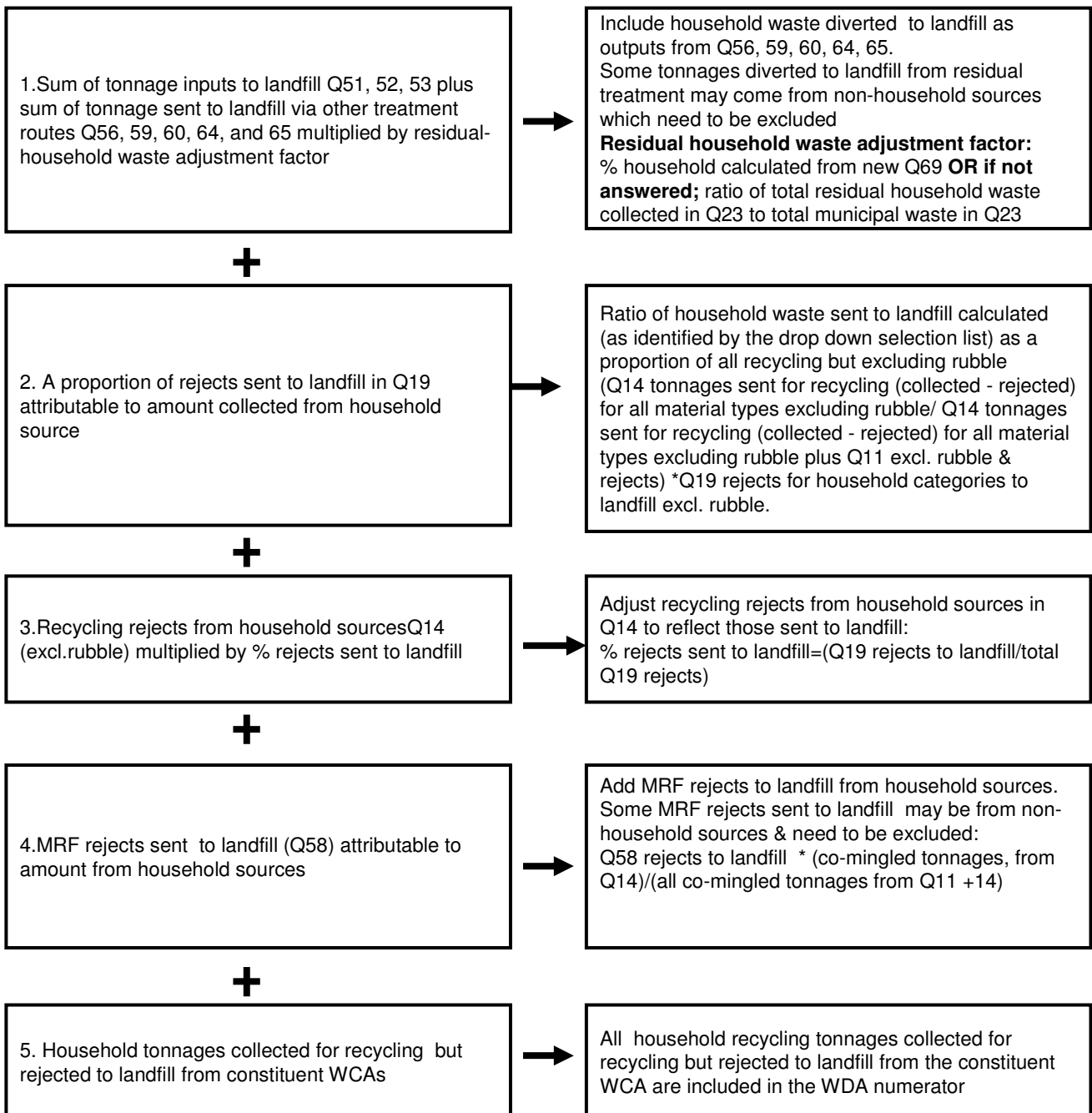
BVPI 82d – Percentage of household waste arisings which have been landfilled

What the indicator measures:

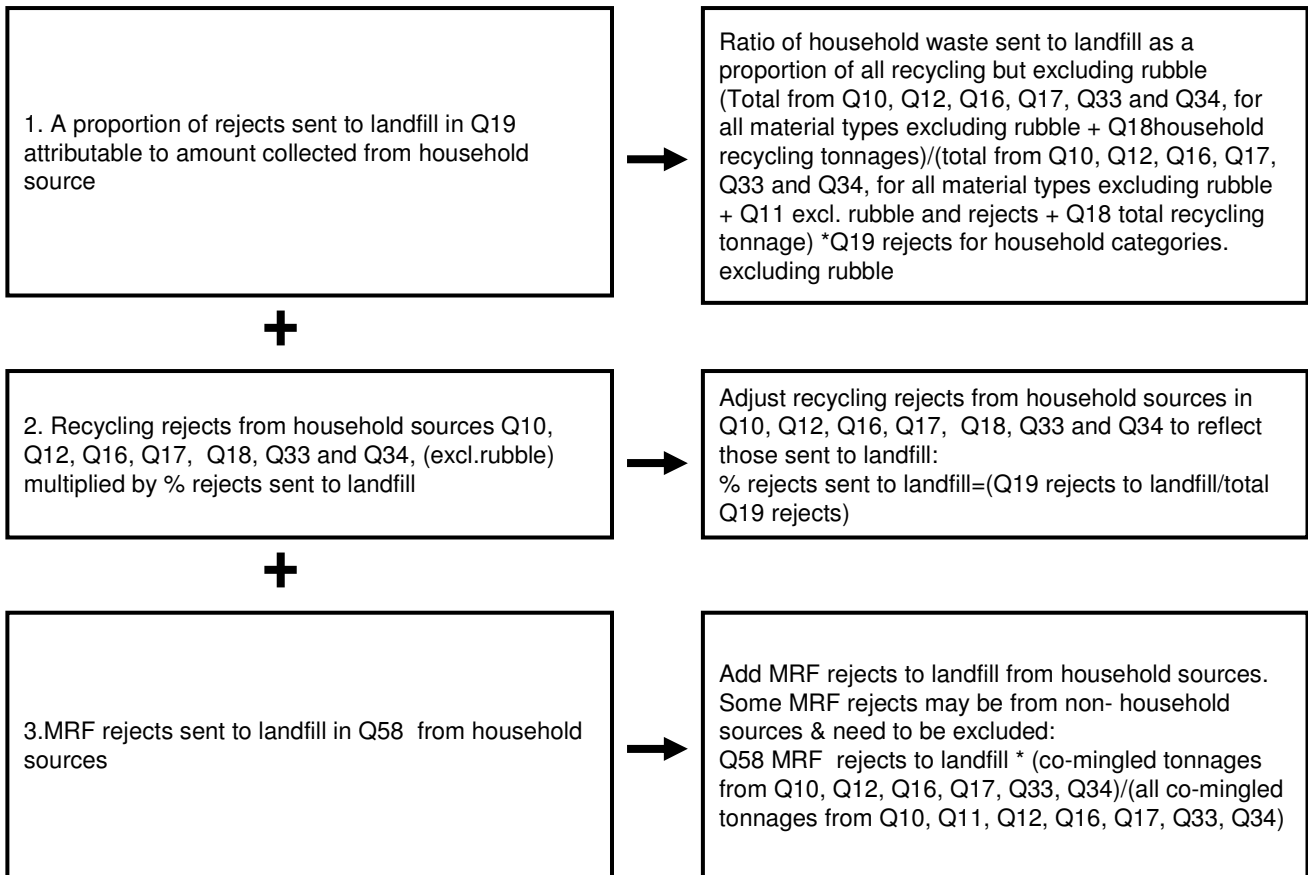
$$\frac{\text{Total tonnage of household waste collected which is landfilled}}{\text{Total tonnage of household waste arisings}} \times 100$$

How the numerator and denominator are calculated using WasteDataFlow is summarised below setting out the questions data is drawn from.

Numerator



Calculation of household recycling rejects sent to landfill from constituent WCAs



Denominator

