

Kpi (a) – Percentage of household waste arisings sent for recycling and composting

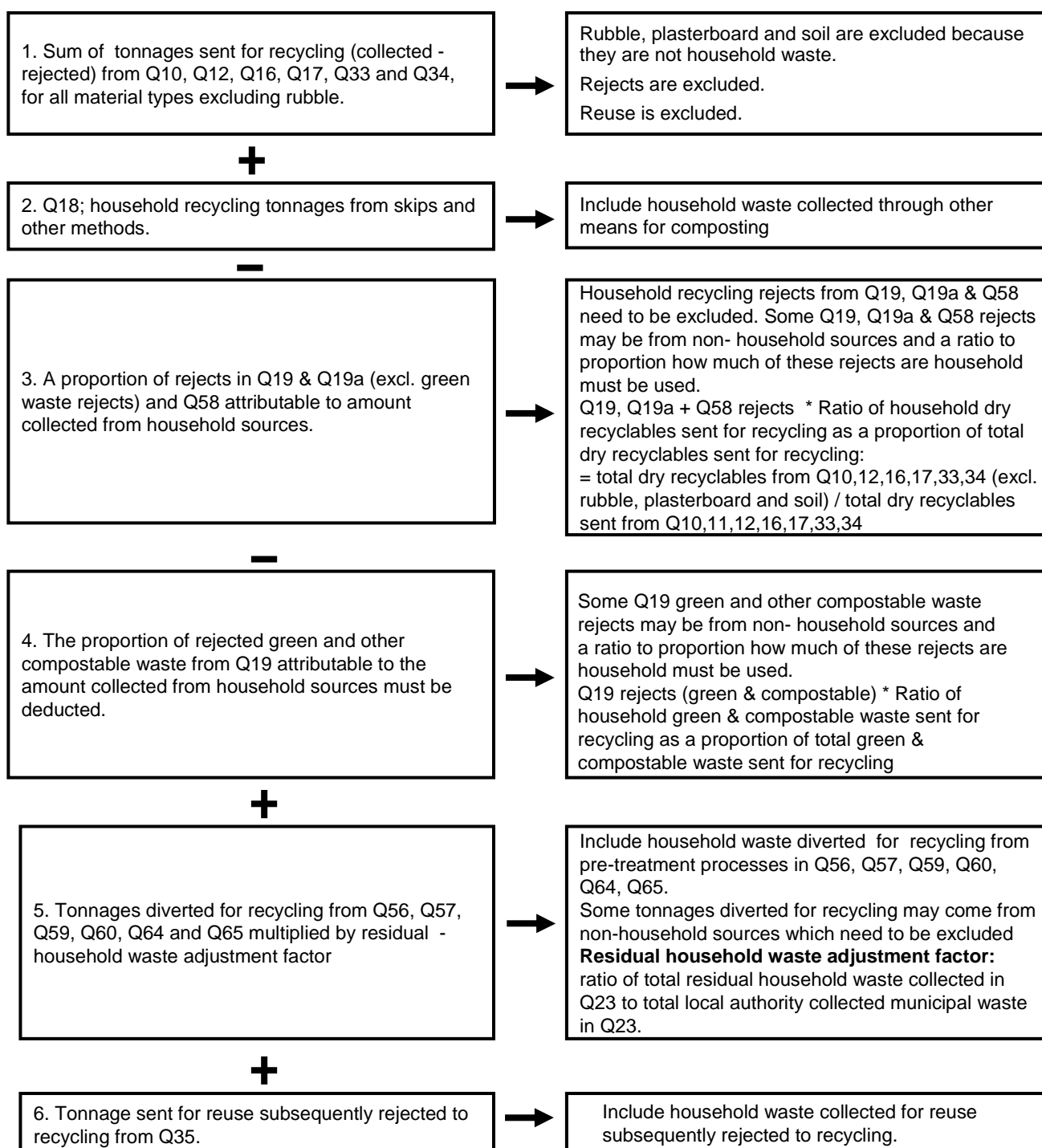
What the indicator measures:

Numerator Total tonnage of household waste sent for recycling and composting x 100

Denominator Total tonnage of household waste arisings

How the numerator and denominator are calculated using WasteDataFlow is summarised below setting out the questions data is drawn from.

Numerator



Denominator

1. Total tonnage of household waste collected for recycling & reuse from Q10, Q12, Q16, Q17, Q18 (household waste column), Q33 and Q34.

Excludes rubble, plasterboard and soil.

Material rejected is not deducted as this is part of the total household waste arisings.

+

2. Total tonnage of residual household waste from Q23

All collected household residual waste.