

## Kpi (e) – Percentage of Local Authority Collected Municipal Waste arisings sent for recycling and composting

### What the indicator measures:

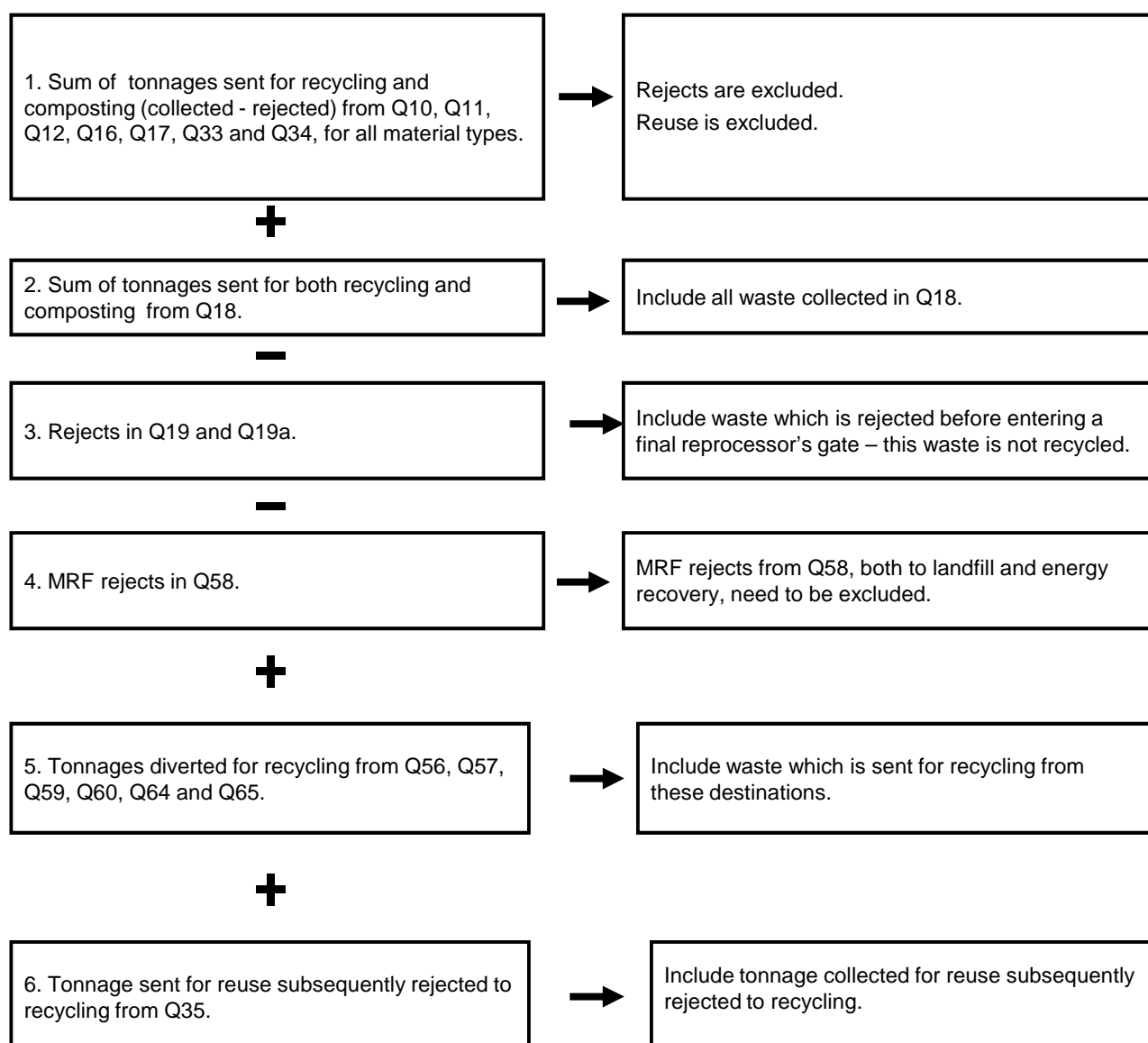
$$\frac{\text{Numerator}}{\text{Denominator}} \times 100$$

**Numerator** Total tonnage of Local Authority Collected Municipal Waste sent for recycling and composting

**Denominator** Total tonnage of Local Authority Collected Municipal Waste arisings

How the numerator and denominator are calculated using WasteDataFlow is summarised below setting out the questions data is drawn from.

### Numerator



***Denominator***

1. Total tonnage of Local Authority Collected Municipal Waste collected for recycling and reuse from Q10, Q11, Q12, Q16, Q17, Q18, Q33 and Q34.



Material rejected is not deducted as this is part of the total local authority collected municipal waste arisings.

+

2. Total tonnage of residual waste from Q23



All Local Authority Collected Municipal Waste collected for disposal