

Kpi (f) – Percentage of Local Authority Collected Municipal Waste arisings landfilled

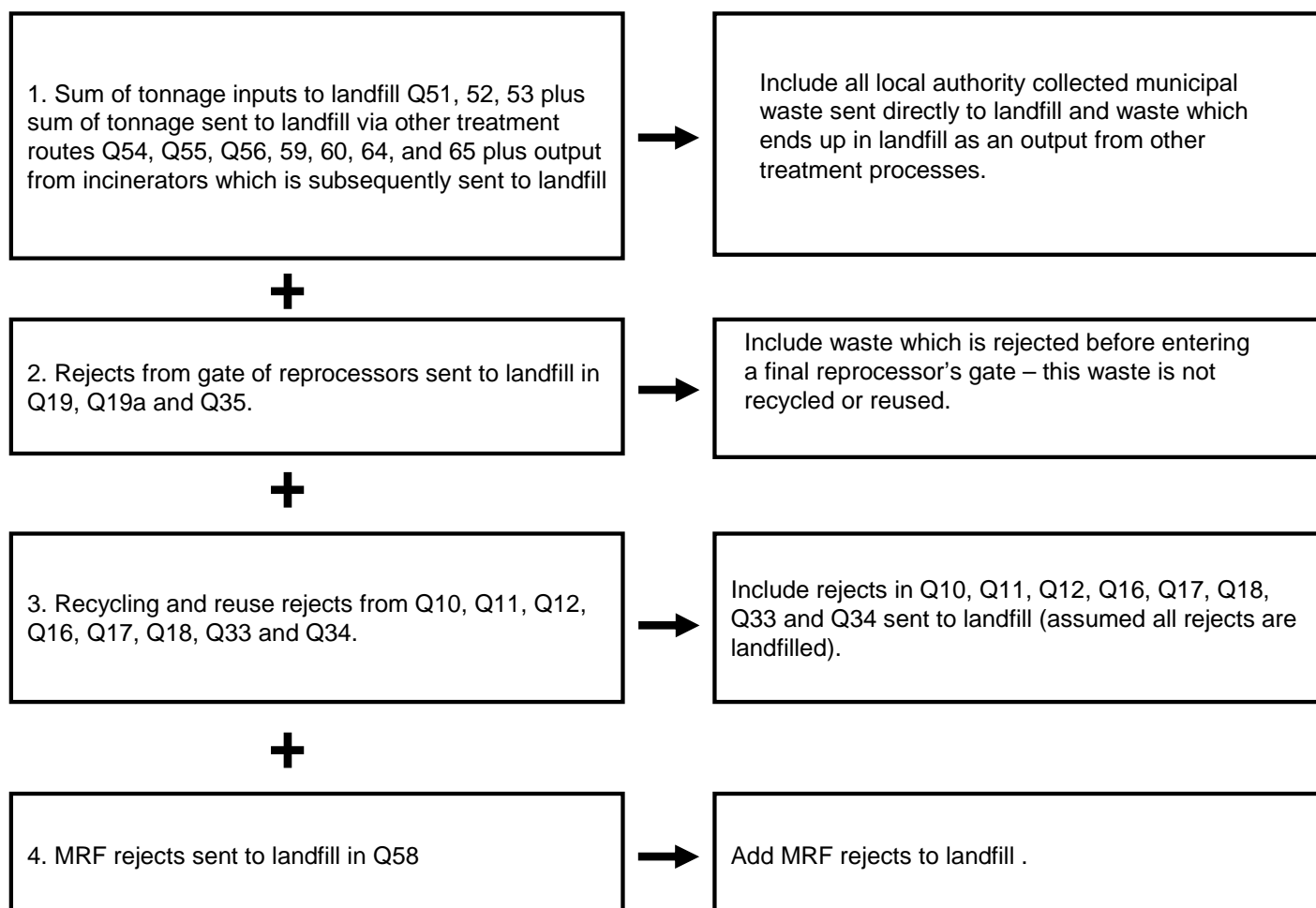
What the indicator measures:

Numerator Total tonnage of landfilled local authority collected municipal waste x 100

Denominator Total tonnage of local authority collected municipal waste arisings

How the numerator and denominator are calculated using WasteDataFlow is summarised below setting out the questions data is drawn from.

Numerator



Denominator

1. Total tonnage of local authority collected municipal waste collected for recycling and reuse from Q10, Q11, Q12, Q16, Q17, Q18, Q33 and Q34.



Material rejected is not deducted as this is part of the total local authority collected municipal waste arisings.

+

2. Total tonnage of residual waste from Q23.



All local authority collected municipal waste collected for disposal.