

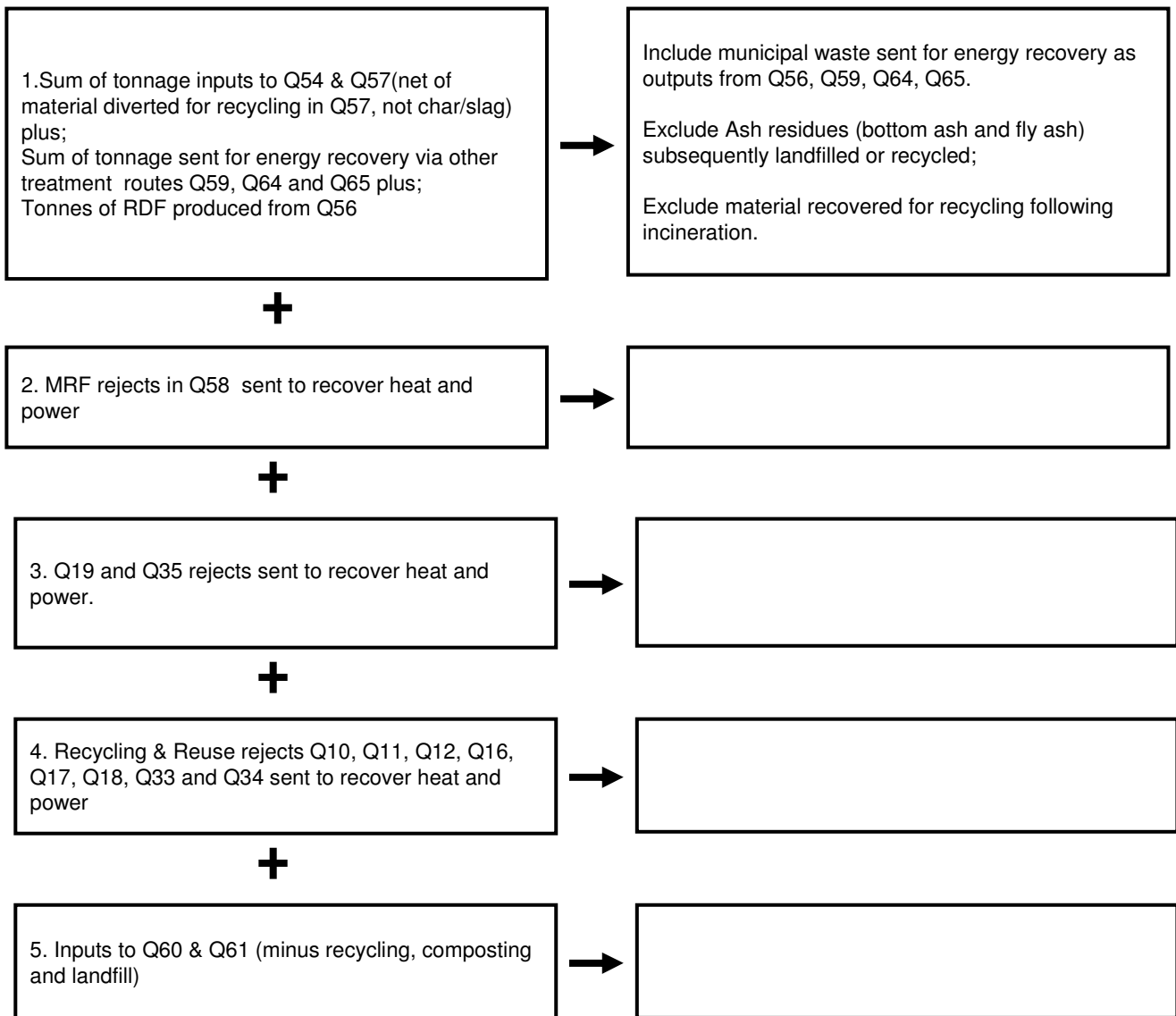
WMT/005 - a) The total tonnage and b) the percentage of municipal waste used to recover heat and power.

What the indicator measures:

$$\frac{\text{Total tonnage of municipal waste collected by the authority which is used to recover heat, power \& other energy sources}}{\text{Total tonnage of municipal waste arisings}} \times 100$$

How the numerator and denominator are calculated using WasteDataFlow is summarised below setting out the questions data is drawn from. **Do not exclude abandoned vehicles, rubble, beach cleansing and incinerator residues.**

Numerator



WMT/005 - a) The total tonnage and b) the percentage of municipal waste used to recover heat and power.

What the indicator measures:

$$\text{Indicator} = \frac{\text{Numerator}}{\text{Denominator}} \times 100$$

Numerator Total tonnage of municipal waste collected by the authority which is used to recover heat, power & other energy sources

Denominator Total tonnage of municipal waste arisings

How the numerator and denominator are calculated using WasteDataFlow is summarised below setting out the questions data is drawn from. **Do not exclude abandoned vehicles, rubble, beach cleansing and incinerator residues.**

Denominator

