

### Kpi (a) – Percentage of household waste arisings which have been sent for recycling and composting

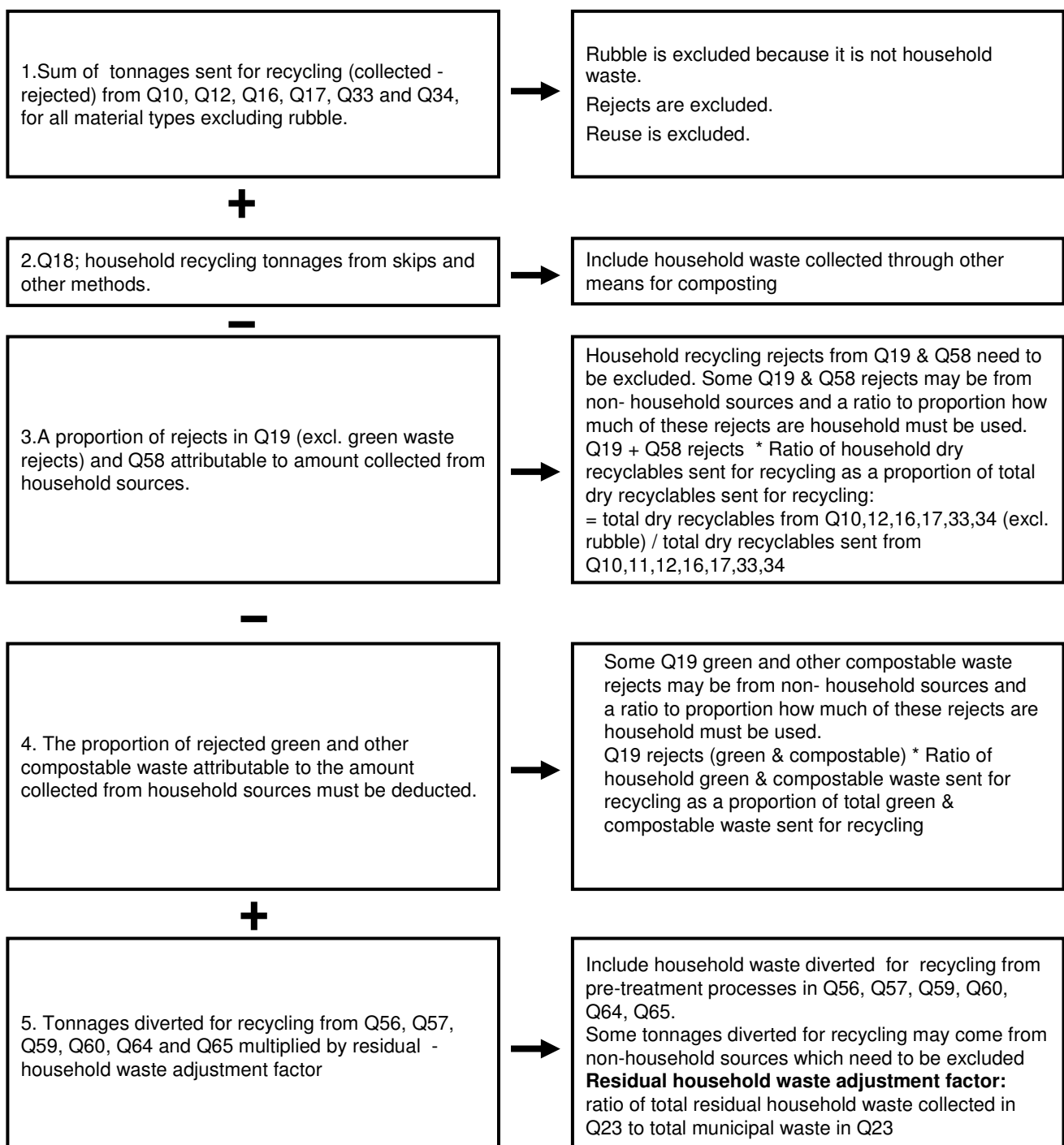
**What the indicator measures:**

**Numerator**  $\frac{\text{Total tonnage of household waste sent for recycling and composting}}{\text{Total tonnage of household waste arisings}} \times 100$

**Denominator**  $\text{Total tonnage of household waste arisings}$

How the numerator and denominator are calculated using WasteDataFlow is summarised below setting out the questions data is drawn from.

#### Numerator



### **Denominator**

