

Kpi (f) – Percentage of municipal waste arisings which have been landfilled

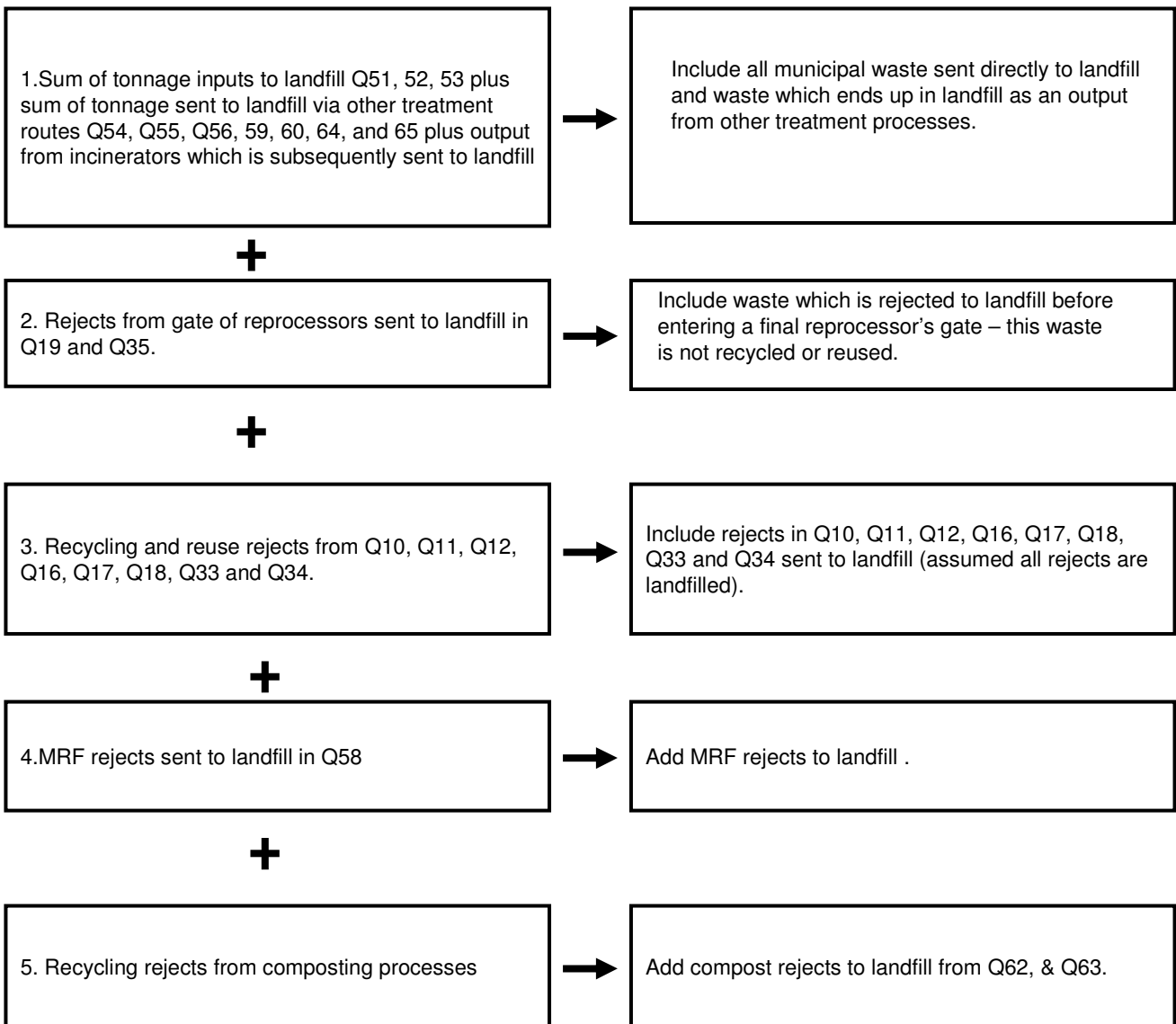
What the indicator measures:

Numerator Total tonnage of municipal waste collected which is landfilled

Denominator Total tonnage of municipal waste arisings

How the numerator and denominator are calculated using WasteDataFlow is summarised below setting out the questions data is drawn from.

Numerator



Denominator

1. Total tonnage of municipal waste collected for recycling and reuse from Q10, Q11, Q12, Q16, Q17, Q18, Q33 and Q34.



Material rejected is not deducted as this is part of the total municipal waste arisings.

+

2. Total tonnage of residual waste from Q23.



All municipal waste collected for disposal.